



T

ABLE OF CONTENT PRODUCT CATALOGUE



CandyminiCard

14



CandyminiCard *per 6 in a giftbox*

16



CandyminiCard *per 12 in a giftbox*

18



Candypraline

20



Candypraline *in Goldblister Box*

22



Candypraline *per 3 in a giftbox*

24



Candypraline *per 6 in a giftbox*

26



CandymaxiCards

28



CandyCard mix in a bigBox

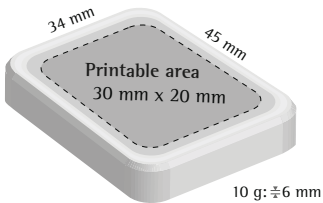
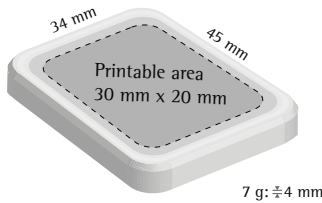
30

CandyminiCard

- Article numbers: E02 or E03
- Net Weight: 7 g or 10 g
- Flavors: Milk, dark, white chocolate with a thin decorated white chocolate layer
- Minimums per flavor: 1.200 pcs and 1.200 pcs/flavor
- Packaging: Individual flowpack with gold decor or transparent
- Dimensions outercase: 355 x 305 x 105 mm
- Outercase 7g: 300 pcs (brut weight per carton: 2.4 Kg)
- Outercase 10 g: 300 pcs (brut weight per carton: 3,3 kg)
- Lead time: 2-3 weeks after approval printproof

Price per piece:		
	7 g	10 g
Min. 1.200 pcs	Inquire for prices on info@CandyCard.be www.CandyCard.be www.CandyCard.com	
from 1.800 pcs		
from 3.000 pcs		
from 6.000 pcs		
from 10.200 pcs		
from 20.400 pcs		
Printpreparationcost: 159,- € (One-off cost)		
Shippingcosts: inquire for quote on info@CandyCard.be		
All prices are VAT excluded and ex-factory Belgium		

Shelflife Storing at max. 18°C and R.H. max. 50%		
Milk	Dark	White
12 Months	12 Months	12 Months



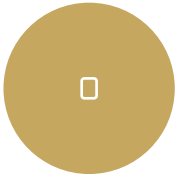
3 steps to your CandyCard



Sent us your design
or lay-out wish

Receive a printproof
and quote

Confirm printproof &
order chocolate



Small individual
packaging

CandyminiCard per 6 in a giftbox

Article number: E1502

Net weight: 6(3x2) x 10 g = 60 g

Flavors: Milk, dark, white chocolate with a thin decorated white chocolate layer.

Only one printpreparation for various designs if in one flavor or one design in various flavors mixed in a giftbox.

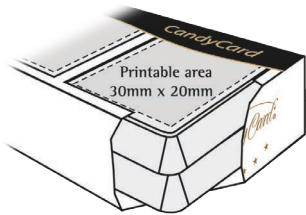
Dimensions outercase: 355 x 305 x 175 mm

Outercase: 30 giftboxes
(brut weight per Outercase: 2,8 kg)

Lead time: 2-3 weeks after approval printproof

Price per giftbox:		Inquire for prices on info@CandyCard.be CandyCard.be CandyCard.com
minimum	150 boxes	
from	270 boxes	
from	360 boxes	
from	510 boxes	
from	1.020 boxes	
from	2.520 boxes	
Printpreparationcost: 159,- €/flavor (One-off cost)		
Shippingcosts: inquire for quote on info@CandyCard.be		
All prices are VAT excluded and ex-factory Belgium		

Shelflife Storing at max. 18°C and R.H. max. 50%		
Milk	Dark	White
12 Months	12 Months	12 Months



TIP: Up to 3 images with only one printpreparationcost.



Small giftbox
3 visuals

CandyminiCard per 12 in a giftbox

Article number: E1603

Net weight: 12(6x2) x 10 g = 120 g

Flavors: Milk, dark, white chocolate with a thin decorated white chocolate layer

Only one printpreparation for various designs if in one flavor or one design in various flavors mixed in a giftbox.

Dimensions outercase: 355 x 305 x 175 mm

Outercase: 20 giftboxes
(brut weight per Outercase: 3,3 kg)

Lead time: 2-3 weeks after approval printproof

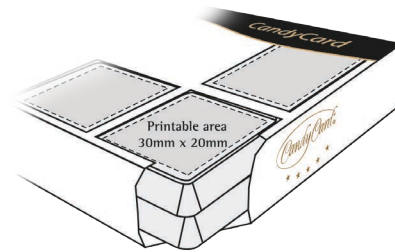
Price per giftbox:		Inquire for prices on info@CandyCard.be CandyCard.be CandyCard.com
from	80 boxes	
from	120 boxes	
from	240 boxes	
from	500 boxes	
from	1.000 boxes	
from	2.500 boxes	

Printpreparationcost: 159,- €/flavor (One-off cost)

Shippingcosts: inquire for quote on info@CandyCard.be

All prices are VAT excluded and ex-factory Belgium

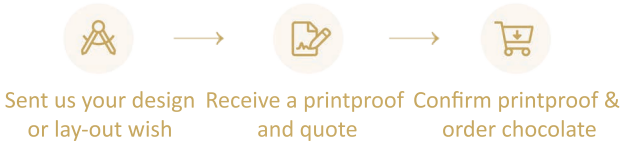
Shelflife Storing at max. 18°C and R.H. max. 50%		
Milk	Dark	White
12 Months	12 Months	12 Months



TIP: Up to 6 images with only one printpreparationcost.



3 steps to your CandyCard



Medium giftbox
6 visuals

Candypraline

Article numbers: E0401

Net weight: 15 g

Flavors shell: Milk, dark, white chocolate with a thin decorated white chocolate layer

Minimum per flavor: 1000 pcs

Filling: Gianduja (hazelnut crème 36 %)

Packaging: Individual flowpack with gold decor or transparent

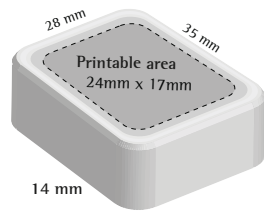
Dimensions outercase: 355 x 305 x 105 mm

Outercase: 250 pcs (Brut weight per Outercase: 4 kg)

Lead time: 2-3 weeks after approval printproof

Shelflife Storing at max. 18°C and R.H. max. 50%

Milk	Dark	White
6 Months	6 Months	6 Months



Price per piece:

from	1.000 pcs	Inquire for prices on info@CandyCard.be CandyCard.be CandyCard.com
from	2.000 pcs	
from	3.000 pcs	
from	5.000 pcs	
from	10.000 pcs	
from	20.000 pcs	

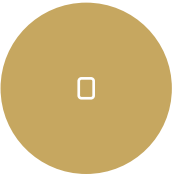
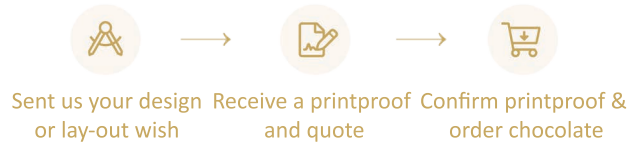
Printpreparationcost: 159,- € (One-off cost)

Shippingcosts: inquire for quote on info@CandyCard.be

All prices are VAT excluded and ex-factory Belgium



3 steps to your CandyCard



Small individual packaging

Candypraline in Goldblister Box

Article number: E0407

Net weight: 15 g

Flavors shell: Milk, dark, white chocolate with a thin decorated white chocolate layer

Minimum: 1050 pcs per flavor

Filling: Gianduja (hazelnut crème 36 %)

Packaging: Individual Gold Blister box with transparent lid

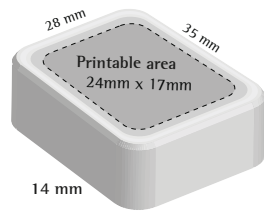
Dimensions outercase: 355 x 305 x 105 mm

Outercase: 210 pcs (Brut weight per Outercase: 3,85 kg)

Lead time: 2-3 weeks after approval printproof

Shelflife Storing at max. 18°C and R.H. max. 50%

Milk	Dark	White
6 Months	6 Months	6 Months



Price per piece:

from	1.050 pcs	Inquire for prices on info@CandyCard.be
from	2.100 pcs	
from	3.150 pcs	CandyCard.be
from	5.040 pcs	CandyCard.com
from	10.080 pcs	

Printpreparationcost: 159,- € (One-off cost)

Shippingcosts: inquire for quote on info@CandyCard.be

All prices are VAT excluded and ex-factory Belgium



3 steps to your CandyCard



Sent us your design
or lay-out wish



Receive a printproof
and quote



Confirm printproof &
order chocolate



Small individual
packaging


CANDYCARD
SINCE 1988

23

Candypraline per 3 in a giftbox

Article number: E1802

Net weight: 3 x 15 g = 45 g

Flavors shell: Milk, dark, white chocolate with a thin decorated white chocolate layer

Only one printpreparation for various designs if in one flavor or one design in various flavors mixed in a giftbox.

Filling: Gianduja (hazelnut crème 36 %)

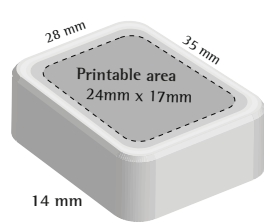
Dimensions outercase: 355 x 305 x 175 mm

Outercase: 30 giftboxes (Brut weight per Outercase: 2,40 kg)

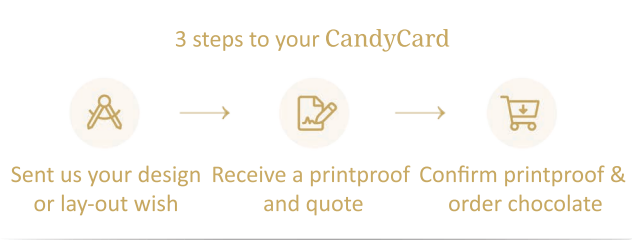
Lead time: 2-3 weeks after approval printproof

Price per giftbox:		
minimum	150 boxes	Inquire for prices on info@CandyCard.be CandyCard.be CandyCard.com
from	180 boxes	
from	270 boxes	
from	360 boxes	
from	510 boxes	
from	1,020 boxes	
from	2,520 boxes	
Printpreparationcost: 159,- €/flavor (One-off cost)		
Shippingcosts: inquire for quote on info@CandyCard.be		
All prices are VAT excluded and ex-factory Belgium		

Shelflife Storing at max. 18°C and R.H. max. 50%		
Milk	Dark	White
6 Months	6 Months	6 Months



TIP: Up to 3 images with only one printpreparationcost.



Small giftbox
3 visuals

Candypraline per 6 in a giftbox

Article number: E1903

Net weight: 6 x 15 g = 90 g

Flavors shell: Milk, dark, white chocolate with a thin decorated white chocolate layer

Only one printpreparation for various designs if in one flavor or one design in various flavors mixed in a giftbox.

Filling: Gianduja (hazelnut crème 36 %)

Dimensions outercase: 355 x 305 x 175 mm

Outercase: 20 giftboxes (Brut weight per Outercase: 2,85 kg)

Lead time: 2-3 weeks after approval printproof

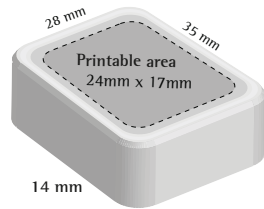
Price per giftbox:		
from	120 boxes	Inquire for prices on info@CandyCard.be CandyCard.be CandyCard.com
from	240 boxes	
from	360 boxes	
from	500 boxes	
from	1.000 boxes	
from	2.500 boxes	

Printpreparationcost: 159,- €/flavor (One-off cost)

Shippingcosts: inquire for quote on info@CandyCard.be

All prices are VAT excluded and ex-factory Belgium

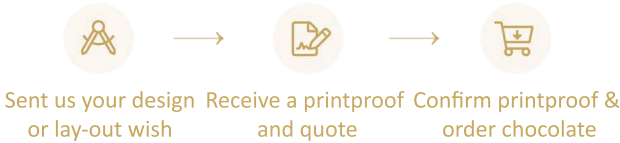
Shelflife Storing at max. 18°C and R.H. max. 50%		
Milk	Dark	White
6 Months	6 Months	6 Months



TIP: Up to 6 images with only one printpreparationcost.



3 steps to your CandyCard



Medium giftbox
6 visuals

CandymaxiCards

Article numbers: E0503 / E0803 / E0903 / E1003

Net weight: 100 g

Flavors: E0503 available in milk, dark, white chocolate with a thin decorated white chocolate layer
E0803/E0903/E1003 only available in white chocolate

minimum: 80 boxes per flavor

Dimensions outercase: 355 x 305 x 175 mm

Outercase: 20 giftboxes
(brut weight per Outercase: 2,9 kg)

Lead time: 2-3 weeks after approval printproof

Shelflife Storing at max. 18°C and R.H. max. 50%		
Milk	Dark	White
12 Months	12 Months	12 Months

Printable area CandymaxiCard			
Art. nr. E0503	Art. nr. E803	Art. nr. E0903	Art. nr. E1003
85 x 55 mm	80 x 70 mm	100 x 70 mm	Diam. 80 mm

Price per giftbox:		
from	80 boxes	Inquire for prices on info@CandyCard.be CandyCard.be CandyCard.com
from	120 boxes	
from	240 boxes	
from	500 boxes	
from	1.000 boxes	
from	2.500 boxes	
Printpreparationcost: 159,- € (One-off cost per article)		
Shippingcosts: inquire for quote on info@CandyCard.be		
All prices are VAT excluded and ex-factory Belgium		



CandyCard mix in a bigBox

Article number: **E2104 / E1704 / E2904 /**

Net weight giftbox: **E2104:** 100g + 12 x 10 g = 220 g
E1704: 24 x 10 g = 240 g
E2904: 2 x 100 g+ 200 g

Flavors: Milk, dark, white chocolate with a thin decorated white chocolate layer

Only one printpreparation for various designs if in one flavor or one design in various flavors mixed in a giftbox.

Dimensions outercase: 355 x 305 x 175 mm

Outercase: 10 giftboxes (brut weight per outercase: 3,3 kg)

Lead time: 2-3 weeks after approval printproof

also available as: CandymaxiCard+ 6x2 CandyminiCards
CandymaxiCard+6 CandyPralines
12 CandyPralines, 12x2 CandyminiCards,
2 CandymaxiCards.

Shelflife Storing at max. 18°C and R.H. max. 50%

Milk	Dark	White
12 Months	12 Months	12 Months

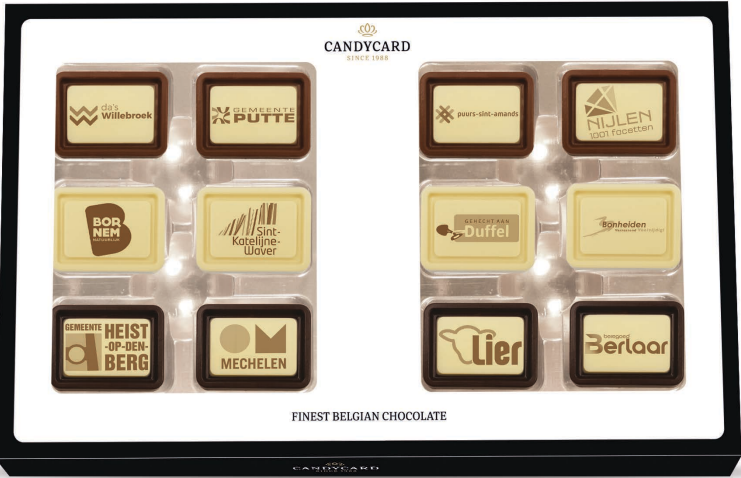
Price per giftbox:		Inquire for prices on info@CandyCard.be CandyCard.be CandyCard.com
from	80 boxes	
from	120 boxes	
from	250 boxes	
from	500 boxes	
from	1.000 boxes	
from	1.500 boxes	
Printpreparationcost: 159,- € (One-off cost)		
Shippingcosts: inquire for quote on info@CandyCard.be		
All prices are VAT excluded and ex-factory Belgium		

TIP: Up to 7 images with only one printpreparationcost.

TIP: Up to 12 images in a giftbox with 24 minicards or 12 pralines.



art.nr.: E2904



art.nr.: E1704



art.nr.: E2104

